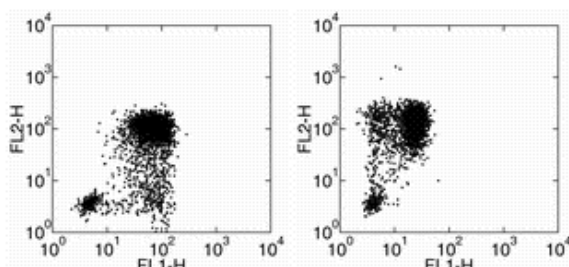


Anti-Human IL-1 beta Purified

Catalog Number: 14-7018

Also Known As: Interleukin-1 beta

RUO: For Research Use Only. Not for use in diagnostic procedures.



Staining of human peripheral blood mononuclear cells stimulated with LPS in the presence of Brefeldin A for 4 hours with Anti-Human CD14 PE (cat. 12-0149) (left) or Anti-Human CD14 FITC (cat. 11-0149) (right) followed by intracellularly Anti-Human IL-1 beta PE.

Product Information

Contents: Anti-Human IL-1 beta Purified

REF **Catalog Number:** 14-7018

Clone: CRM56

Concentration: 0.5 mg/mL

Host/Isotype: Mouse IgG1

Formulation: aqueous buffer, 0.09% sodium azide, may contain carrier protein/stabilizer



Temperature Limitation: Store at 2-8°C.



Batch Code: Refer to Vial



Use By: Refer to Vial



Caution, contains Azide

Description

The CRM56 antibody reacts with human and baboon interleukin-1 beta; (IL-1 beta). IL-1 beta is a 17 kDa factor secreted primarily by monocytes. IL-1 has effects on T-helper cells, inducing IL-2 secretion and expression of IL-2 receptors. IL-1 has effects on B cells, promoting cell proliferation and immunoglobulin synthesis.

Applications Reported

The CRM56 antibody has been reported for use in intracellular staining for flow cytometric analysis, cytokine neutralization, and ELISA. Fluorochrome conjugated CRM56 is recommended for use in intracellular staining for flow cytometry. Functional Grade purified CRM56, cat. 16-7018, is recommended for use in functional assays.

Applications Tested

The CRM56 antibody has been tested as the capture antibody in a sandwich ELISA for analysis of human interleukin-1 β (IL-1 β) in combination with the biotin CRM57 (13-7016) antibody for detection and recombinant human IL-1 β (14-8018) as the standard. A suitable range of concentrations of this antibody for ELISA capture is 1 - 4 μ g/mL. A standard curve consisting of doubling dilutions of the recombinant standard over the range of 1000 pg/mL - 8 pg/mL should be included in each ELISA plate.

The Functional Grade Purified CRM56 antibody has been tested for neutralization of IL-1 β bioactivity.

The fluorochrome-conjugated CRM56 antibody has been tested by intracellular staining for flow cytometric analysis. The fluorochrome-conjugated CRM56 antibody is offered in 2 formats:

- μ g size: has been tested by intracellular staining with flow cytometric analysis and can be used at less than or equal to 0.50 μ g/million cells/100 μ l staining volume. It is recommended that the antibody be carefully titrated for optimal performance in the assay of interest.
- test size: has been pre-titrated and tested by intracellular staining and flow cytometric analysis of activated human PBMC and can be used at 20 μ l per million cells 100 μ l blood.

Related Products

- 00-4202 ELISA Diluent Solution (5X)
- 12-0149 Anti-Human CD14 PE (61D3)
- 13-7016 Anti-Human IL-1 beta Biotin (CRM57)
- 14-4714 Mouse IgG1 K Isotype Control Purified (P3.6.2.1)
- 18-4100 Avidin HRP
- 39-8018 Human IL-1 beta Single-Use ELISA RSG Standard
- 44-2404 Nunc MaxiSorp® flat-bottom 96 well plate

Not for further distribution without written consent.

Copyright © 2000-2010 eBioscience, Inc.

Tel: 888.999.1371 or 858.642.2058 • Fax: 858.642.2046 • www.eBioscience.com • info@eBioscience.com