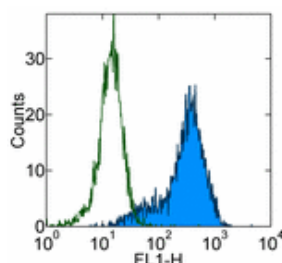


Anti-Mouse Ly-6A/E (Sca-1) Purified

Catalog Number: 14-5981

Also Known As: Sca1, Ly6AE, Ly6A, Ly6E

RUO: For Research Use Only



Staining of 3-day ConA activated C57Bl/6 splenocytes with 0.5 µg of Rat IgG2a κ Isotype Control Purified (cat. 14-4321) (open histogram) or 0.5 µg of Anti-Mouse Ly-6A/E (Sca-1) Purified (filled histogram) followed by Anti-Rat IgG FITC (cat. 11-4811). Total viable cells were used for analysis.

Product Information

Contents: Anti-Mouse Ly-6A/E (Sca-1) Purified

REF Catalog Number: 14-5981

Clone: D7

Concentration: 0.5 mg/ml

Host/Isotype: Rat IgG2a, κ

Formulation: aqueous buffer, 0.09% sodium azide, may contain carrier protein/stabilizer



Temperature Limitation: Store at 2-8°C.



Batch Code: Refer to Vial



Use By: Refer to Vial



Caution, contains Azide

Description

The D7 monoclonal antibody reacts with mouse Sca-1, an 18 kDa member of the Ly-6 family of GPI-linked surface proteins. D7 reacts with both Ly-6E.1 and Ly-6A.2 molecules expressed by mouse hematopoietic stem cells, myeloid population and peripheral T and B cells. Non-activated splenocytes from Ly-6.2 strains including C57BL, SJL, 129, AKR, and others demonstrate higher frequency of D7-positive cells compared to the Ly-6.1 strains such as BALB/c, C3H, NZB and others. Sca-1 is expressed at high levels upon activation regardless of the Ly-6 haplotype. The Ly-6 family is involved in regulation and function of T cell activation. Sca-1 is a major phenotypic marker for mouse hematopoietic progenitor/stem cell subset.

Applications Reported

D7 has been reported for use in flow cytometric analysis, immunohistochemistry, immunoblotting (WB), immunoprecipitation, and in functional assays (use Functional Grade purified, cat.16-5981).

Applications Tested

The D7 antibody has been tested by flow cytometric analysis of mouse splenocyte and bone marrow cell suspensions and can be used at less than or equal to 0.5 µg per test. A test is defined as the amount (µg) of antibody that will stain a cell sample in a final volume of 100 µL. Cell number should be determined empirically but can range from 10⁵ to 10⁸ cells/test. It is recommended that the antibody be carefully titrated for optimal performance in the assay of interest.

References

Ortega, G., P. E. Kory, et al. (1986). "Role of Ly-6 in lymphocyte activation. I. Characterization of a monoclonal antibody to a nonpolymorphic Ly-6 specificity." *J Immunol* 137(10): 3240-6.

Malek, T. R., G. Ortega, et al. (1986). "Role of Ly-6 in lymphocyte activation. II. Induction of T cell activation by monoclonal anti-Ly-6 antibodies." *J Exp Med* 164(3): 709-22.

Related Products

11-4317 Streptavidin FITC

11-4811 Anti-Rat IgG FITC

12-4317 Streptavidin PE

13-4813 Anti-Rat IgG Biotin (Polyclonal)

14-4321 Rat IgG2a K Isotype Control Purified

17-4317 Streptavidin APC

Not for further distribution without written consent.

Copyright © 2000-2010 eBioscience, Inc.

Tel: 888.999.1371 or 858.642.2058 • Fax: 858.642.2046 • www.eBioscience.com • info@eBioscience.com