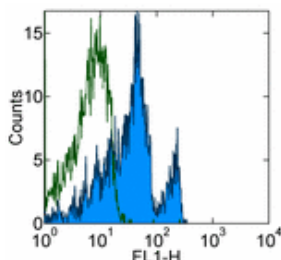


## Anti-Human CD272 (BTLA) Purified

Catalog Number: 14-5979

Also Known As: B and T lymphocyte attenuator

RUO: For Research Use Only



Staining of normal human peripheral blood cells with 0.25 µg of Mouse IgG2a κ Isotype Control Purified (cat. 14-4724) (open histogram) or 0.25 µg of Anti-Human CD272 (BTLA) Purified (filled histogram) followed by Anti-Mouse IgG FITC (cat. 11-4011). Cells in the lymphocyte gate were used for analysis.

### Product Information

Contents: Anti-Human CD272 (BTLA) Purified

**REF** Catalog Number: 14-5979

Clone: MIH26

Concentration: 0.5 mg/ml

Host/Isotype: Mouse IgG2a

Formulation: aqueous buffer, 0.09% sodium azide, may contain carrier protein/stabilizer



Temperature Limitation: Store at 2-8°C.



Batch Code: Refer to Vial



Use By: Refer to Vial



Caution, contains Azide

### Description

The BTLA monoclonal antibody reacts with human B and T lymphocyte attenuator (BTLA). BTLA is expressed by peripheral lymphocytes, splenic macrophages, developing B cells in the bone marrow and developing T cells in the thymus and mature, but not immature bone marrow-derived dendritic cells. BTLA is implicated as a negative regulator of the activation and/or function of various hemopoietic cell types. It is reported that BTLA binds to B7-H4, but further studies are needed to confirm this interaction.

### Applications Reported

This MIH26 antibody has been reported for use in flow cytometric analysis.

### Applications Tested

This MIH26 antibody has been tested by flow cytometric analysis of normal human peripheral blood. This can be used at less than or equal to 0.5 µg per test. A test is defined as the amount (µg) of antibody that will stain a cell sample in a final volume of 100 µL. Cell number should be determined empirically but can range from 10<sup>5</sup> to 10<sup>8</sup> cells/test. It is recommended that the antibody be carefully titrated for optimal performance in the assay of interest.

### References

Watanabe N, Gavrieli M, Sedy JR, Yang J, Fallarino F, Loftin SK, Hurchla MA, Zimmerman N, Sim J, Zang X, Murphy TL, Russell JH, Allison JP, Murphy KM. BTLA is a lymphocyte inhibitory receptor with similarities to CTLA-4 and PD-1. *Nat Immunol.* 2003 Jul;4(7):670-9.

Han P, Goularte OD, Rufner K, Wilkinson B, Kaye J. An inhibitory Ig superfamily protein expressed by lymphocytes and APCs is also an early marker of thymocyte positive selection. *J Immunol.* 2004 May 15;172(10):5931-9.

Sedy JR, Gavrieli M, Potter KG, Hurchla MA, Lindsley RC, Hildner K, Scheu S, Pfeffer K, Ware CF, Murphy TL, Murphy KM. B and T lymphocyte attenuator regulates T cell activation through interaction with herpesvirus entry mediator. *Nat Immunol.* 2005 Jan;6(1):90-8.

### Related Products

14-4724 Mouse IgG2a K Isotype Control Purified

Not for further distribution without written consent.

Copyright © 2000-2010 eBioscience, Inc.

Tel: 888.999.1371 or 858.642.2058 • Fax: 858.642.2046 • [www.eBioscience.com](http://www.eBioscience.com) • [info@eBioscience.com](mailto:info@eBioscience.com)