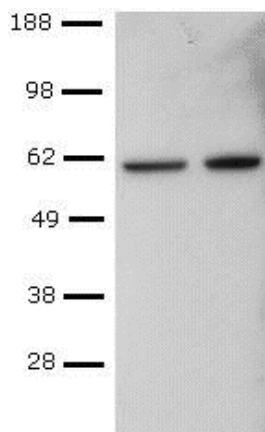


## Anti-Human/Mouse T-bet Purified

**Catalog Number:** 14-5825

**Also Known As:** Th1-specific T box transcription factor, T-box expressed in T cells

**RUO: For Research Use Only. Not for use in diagnostic procedures.**



CD4<sup>+</sup> T cells were sorted from mouse spleen, activated with Anti-Mouse CD3 and Anti-Mouse CD28, followed by culture in Th1-polarizing conditions, and re-activation with PMA and Ionomycin. Lysates from control (left) or PMA and Ionomycin-re-activated (right) cells were probed with Anti-Human/Mouse T-bet Purified at 2 µg/mL, and revealed with Anti-Mouse IgG HRP.

### Product Information

**Contents:** Anti-Human/Mouse T-bet Purified

**REF** **Catalog Number:** 14-5825

**Clone:** eBio4B10 (4B10, 4-B10)

**Concentration:** 0.5 mg/mL

**Host/Isotype:** Mouse IgG1, kappa

**Formulation:** aqueous buffer, 0.09% sodium azide, may contain carrier protein/stabilizer



**Temperature Limitation:** Store at 2-8°C.



**Batch Code:** Refer to Vial



**Use By:** Refer to Vial



**Caution, contains Azide**

### Description

The eBio4B10 monoclonal antibody reacts with mouse and human T-bet. T-bet is a Th1-specific T-box transcription factor critical to the development of the Th1 CD4<sup>+</sup> T cell lineage. This is known based on the observations that T-Bet deficient mice have impaired Th1 cell development, and that ectopic expression of T-Bet results in development skewed to the Th1 lineage. T-Bet expression is induced by the Th1 cytokine IFN gamma, and T-Bet also regulates the expression of IFN gamma, likely, at least in part, through the modification of DNA accessibility and histone remodeling. In addition to IFN gamma, T-Bet is also known to regulate the expression of IL-12R beta and IL-2. Moreover, T-Bet plays a role in class-switch recombination in B-cells.

### Applications Reported

This eBio4B10 antibody has been reported for use in immunohistochemical staining of formalin-fixed paraffin embedded tissue sections (with citrate antigen retrieval), immunoprecipitation, and immunoblotting (WB).

### Applications Tested

This eBio4B10 antibody has been tested by western blot analysis of Th1-polarized mouse CD4<sup>+</sup> T cells and can be used at 2 µg/ml as a starting dilution for western blotting.

### References

Ness-Schwickerath KJ, Jin C, Morita CT. Cytokine requirements for the differentiation and expansion of IL-17A- and IL-22-producing human Vgamma2Vdelta2 T cells. *J Immunol.* 2010 Jun 15;184(12):7268-80. (**4B10**, crossreactivity in rhesus)

Usui T, Preiss JC, Kanno Y, Yao ZJ, Bream JH, O'Shea JJ, Strober W. T-bet regulates Th1 responses through essential effects on GATA-3 function rather than on IFNG gene acetylation and transcription. *J Exp Med.* 2006 Mar 20;203(3):755-66.

Hwang ES, Hong JH, Glimcher LH. IL-2 production in developing Th1 cells is regulated by heterodimerization of RelA and T-bet and requires T-bet serine residue 508. *J Exp Med.* 2005 Nov 7;202(9):1289-300.

Dorfman DM, van den Elzen P, Weng AP, Shahsafari A, Glimcher LH. Differential expression of T-bet, a T-box transcription factor required for Th1 T-cell development, in peripheral T-cell lymphomas. *Am J Clin Pathol.* 2003 Dec;120(6):866-73. (**4B10** IHC paraffin

PubMed)

Szabo SJ, Kim ST, Costa GL, Zhang X, Fathman CG, Glimcher LH. A novel transcription factor, T-bet, directs Th1 lineage commitment. *Cell*. 2000 Mar 17;100(6):655-69. (**4B10**, FC, WB, PubMed)

**Related Products**

00-5521 Foxp3 Fixation/Permeabilization Concentrate and Diluent

11-4011 Anti-Mouse IgG FITC

14-4714 Mouse IgG1 K Isotype Control Purified (P3.6.2.1)

---

Not for further distribution without written consent.

Copyright © 2000-2010 eBioscience, Inc.

Tel: 888.999.1371 or 858.642.2058 • Fax: 858.642.2046 • [www.eBioscience.com](http://www.eBioscience.com) • [info@eBioscience.com](mailto:info@eBioscience.com)