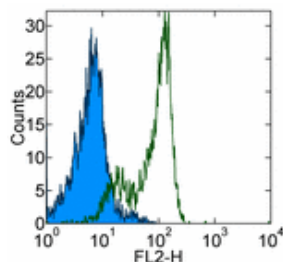


Anti-Human CD100 (SEMA4D) Purified

Catalog Number: 14-1009

Also Known As: Semaphorin 4D

RUO: For Research Use Only



Staining of normal human peripheral blood cells with 0.25 µg of Mouse IgM Isotype Control Purified, (cat. 14-4752) (open histogram) or Anti-Human CD100 (SEMA4D) Purified (filled histogram) followed by Anti-Mouse IgM PE (cat. 12-5890). Cells in the lymphocyte gate were used for analysis.

Product Information

Contents: Anti-Human CD100 (SEMA4D) Purified

REF Catalog Number: 14-1009

Clone: eBio133-1C6 (133-1C6)

Concentration: 0.5 mg/ml

Host/Isotype: Mouse IgM

Formulation: aqueous buffer, 0.09% sodium azide, may contain carrier protein/stabilizer



Temperature Limitation: Store at 2-8°C.



Batch Code: Refer to Vial



Use By: Refer to Vial



Caution, contains Azide

Description

The eBio133-1C6 monoclonal antibody reacts with human CD100, a member of the class IV semaphorin family also called sema4D. CD100 promotes angiogenesis, invasive growth, proliferation, and anti-apoptosis of cancer cells in vitro. Furthermore CD100 is a costimulatory molecule in adaptive immune responses by switching off negative signalling from CD72. In addition to CD72 another ligand is Plexin-B1. It has been shown that higher expression levels of CD100 are correlated with poor survival in soft tissue sarcoma patients. Expression is found in both hematopoietic and non-hematopoietic cells. CD100 is expressed on resting T cells and NK cells and B cell. CD100 can also exist as a soluble form.

Applications Reported

This eBio133-1C6 (133-1C6) antibody has been reported for use in flow cytometric analysis, immunoprecipitation, and ELISA.

Applications Tested

This eBio133-1C6 (133-1C6) antibody has been tested by flow cytometric analysis of human peripheral blood cells. This can be used at less than or equal to 0.5 µg per test. A test is defined as the amount (µg) of antibody that will stain a cell sample in a final volume of 100 µL. Cell number should be determined empirically but can range from 10⁵ to 10⁸ cells/test. It is recommended that the antibody be carefully titrated for optimal performance in the assay of interest.

References

Schlossman, S., L. Bloumsell, et al. eds (1995). Leucocyte Typing V: White Cell Differentiation Antigens. Oxford University Press. New York.

Related Products

12-5890 Anti-Mouse IgM PE (eB121-15F9)

14-1001 Anti-Mouse CD100 (SEMA4D) Purified (BMA12 (BMA-12))

14-4752 Mouse IgM Isotype Control Purified

Not for further distribution without written consent.

Copyright © 2000-2010 eBioscience, Inc.

Tel: 888.999.1371 or 858.642.2058 • Fax: 858.642.2046 • www.eBioscience.com • info@eBioscience.com