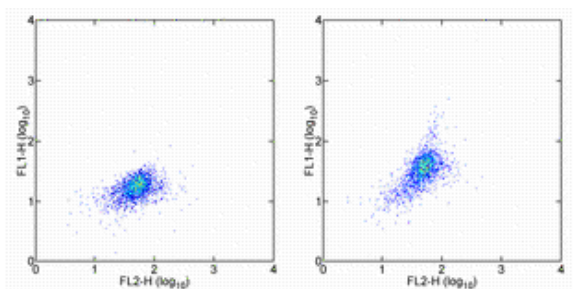


Anti-Human IL-15 Receptor FITC

Catalog Number: 11-7159

Also Known As: Interleukin-15 Receptor alpha

RUO: For Research Use Only. Not for use in diagnostic procedures.



Normal human peripheral blood cells were stimulated overnight with LPS and Human IFN gamma Recombinant Protein (cat. 14-8319). The cells were stained with Anti-Human CD11b PE (cat. 12-0113) and Mouse IgG2b K Isotype Control FITC (cat. 11-4732) (left) or Anti-Human IL-15 Receptor FITC (right). Cells in the monocyte gate were used for analysis.

Product Information

Contents: Anti-Human IL-15 Receptor FITC


REF **Catalog Number:** 11-7159

Clone: eBioJM7A4

Concentration: 5 µL (0.5 µg)/test

Host/Isotype: Mouse IgG2b

Formulation: aqueous buffer, 0.09% sodium azide, may contain carrier protein/stabilizer

 **Temperature Limitation:** Store at 2-8°C. Do not freeze. Light sensitive material.

LOT **Batch Code:** Refer to Vial

 **Use By:** Refer to Vial

 **Caution, contains Azide**

Description

The eBioJM7A4 monoclonal antibody reacts with the IL-15 receptor alpha chain (IL-15Rα). IL-15 and IL-2 are cytokines with overlapping, but distinct, biologic effects. Their receptors share 2 subunits, the IL2R-β and -γ chains, which are essential for signal transduction. The IL-15Rα receptor is structurally related to IL-2R-α. However, the IL-15Rα alone binds IL-15 with a 1,000-fold higher affinity than that seen with IL-2R-α and IL-2. In the human, 3 differentially spliced human IL15R-α variants that are all capable of high affinity binding of IL-15 have been isolated. The cytoplasmic domain of IL15R-α, like that of IL2R-α, is dispensable for mitogenic signaling, suggesting that the primary role of the alpha chains is to confer high affinity binding. At high concentrations, IL-15, like IL-2, is able to signal through a complex of IL2R-β and IL2R-γ in the absence of the alpha subunit.

Applications Reported

This eBioJM7A4 antibody has been reported for use in flow cytometric analysis.

Applications Tested

This eBioJM7A4 antibody has been pre-titrated and tested by flow cytometric analysis of LPS and IFN gamma-stimulated PBMCs. This can be used at 5 µL (0.5 µg) per test. A test is defined as the amount (µg) of antibody that will stain a cell sample in a final volume of 100 µL. Cell number should be determined empirically but can range from 10⁵ to 10⁸ cells/test.

References

Vamosi G, Bodnar A, Vereb G, Jenei A, Goldman CK, Langowski J, Toth K, Matyus L, Szollosi J, Waldmann TA, Damjanovich S. IL-2 and IL-15 receptor alpha-subunits are coexpressed in a supramolecular receptor cluster in lipid rafts of T cells. *Proc Natl Acad Sci U S A*. 2004 Jul 27;101(30):11082-7. (**JM7A4**, FRET, PubMed)

Dubois S, Mariner J, Waldmann TA, Tagaya Y. IL-15Rα recycles and presents IL-15 in trans to neighboring cells. *Immunity*. 2002 Nov;17(5):537-47. (**JM7A4**, FC, WB, PubMed)

Anderson, D., et al. 1995. Functional characterization of the human interleukin-15 receptor alpha chain and close linkage of IL15RA and IL2RA genes. *J. Biol. Chem.* 270: 29862-29869.

Giri, J., et al. 1995. Identification and cloning of a novel IL-15 binding protein that is structurally related to the alpha of the IL-2 receptor. *EMBO J.* 14: 3654-3663.

Related Products

11-4732 Mouse IgG2b K Isotype Control FITC

12-0113 Anti-Human CD11b (activation epitope) PE (CBRM1/5)

14-8319 Human IFN gamma Recombinant Protein

Not for further distribution without written consent.

Copyright © 2000-2012 eBioscience, Inc.

Tel: 888.999.1371 or 858.642.2058 • Fax: 858.642.2046 • www.eBioscience.com • info@eBioscience.com