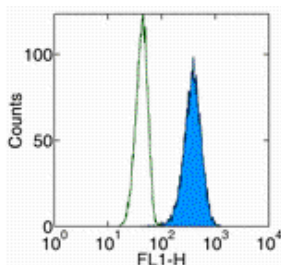


Anti-Cytochrome C FITC

Catalog Number: 11-6601

Also Known As: cyt c

RUO: For Research Use Only. Not for use in diagnostic procedures.



Intracellular staining of the HeLa cell line with anti-Cytochrome c FITC. Appropriate isotype controls were used (open histogram). Total cells were used for analysis.

Product Information

Contents: Anti-Cytochrome C FITC


REF **Catalog Number:** 11-6601

Clone: 6H2


Concentration: 0.5 mg/mL


Host/Isotype: Mouse IgG1, kappa

Formulation: aqueous buffer, 0.09% sodium azide, may contain carrier protein/stabilizer

 **Temperature Limitation:** Store at 2-8°C. Do not freeze. Light sensitive material.

LOT **Batch Code:** Refer to Vial

 **Use By:** Refer to Vial

 **Caution, contains Azide**

Description

The 6H2 antibody reacts with the native form of mouse, human, and rat cytochrome c.

Applications Reported

The 6H2 antibody has been reported for use in intracellular flow cytometric analysis.

Applications Tested

The 6H2 antibody has been tested by intracellular flow cytometric analysis. This can be used at less than or equal to 1 µg per test. A test is defined as the amount (µg) of antibody that will stain a cell sample in a final volume of 100 µL. Cell number should be determined empirically but can range from 10⁵ to 10⁸ cells/test. It is recommended that the antibody be carefully titrated for optimal performance in the assay of interest.

References

Jemmerson et al., Eur J Immunol, 1991 21: 143-151

Goshorn et al, J Biol Chem 1991 266(4) 2134-42.

Related Products

00-8222 IC Fixation Buffer

00-8333 Permeabilization Buffer (10X)

11-4714 Mouse IgG1 K Isotype Control FITC (P3.6.2.8.1)

14-6602 Anti-Cytochrome C Purified (7H8)

88-8824 Intracellular Fixation & Permeabilization Buffer Set

Not for further distribution without written consent.

Copyright © 2000-2012 eBioscience, Inc.

Tel: 888.999.1371 or 858.642.2058 • Fax: 858.642.2046 • www.eBioscience.com • info@eBioscience.com