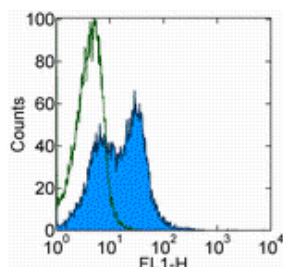


## Anti-Human/Mouse Integrin beta 7 FITC

**Catalog Number:** 11-5867

**Also Known As:** Integrin b7, ITGB7

**RUO: For Research Use Only**



Staining of normal human peripheral blood cells with Rat IgG2a K Isotype Control FITC (cat. 11-4321) (open histogram) or Anti-Human/Mouse Integrin beta 7 FITC (filled histogram). Cells in the lymphocyte gate were used for analysis.

### Product Information

**Contents:** Anti-Human/Mouse Integrin beta 7 FITC

**REF** **Catalog Number:** 11-5867

**Clone:** FIB504

**Concentration:** 5 uL (0.125 ug)/test

**Host/Isotype:** Rat IgG2a, kappa

**Formulation:** aqueous buffer, 0.09% sodium azide, may contain carrier protein/stabilizer

 **Temperature Limitation:** Store at 2-8°C. Do not freeze. Light sensitive material.

**LOT** **Batch Code:** Refer to Vial

 **Use By:** Refer to Vial

 **Caution, contains Azide**

### Description

The FIB504 monoclonal antibody reacts with human and mouse integrin beta 7. Integrin beta 7 is a 130 kD glycoprotein which associates with integrin alpha 4 (CD49d) to form the alpha 4 beta 7 integrin LPAM-1, expressed on intraepithelial lymphocytes. It also associates with alpha E (CD103) to form the alpha E beta 7 integrin HML-1, expressed on T cells adjacent to mucosal epithelium and intraepithelial lymphocytes. Main ligands for integrin alpha 4 beta 7 include VCAM-1 (CD106), MAdCAM-1 and fibronectin, while the main ligand of integrin alpha E beta 7 is E-cadherin (CD324). Integrin beta 7 plays an important role in the adhesion of leukocytes to endothelial cells promoting the transmigration of leukocytes to extravascular spaces during the inflammatory response. The FIB504 antibody has been reported to have blocking activity.

### Applications Reported

This FIB504 antibody has been reported for use in flow cytometric analysis.

### Applications Tested

This FIB504 antibody has been tested by flow cytometric analysis of human peripheral blood cells. This can be used at 5 µl (0.125 µg)/per test. A test is defined as the amount (µg)/test of antibody that will stain a cell sample in a final volume of 100 µL. Cell number should be determined empirically but can range from 10<sup>5</sup> to 10<sup>8</sup> cells/test.

### References

Rodriguez MW, Paquet AC, Yang YH, Erle DJ. Differential gene expression by integrin beta7+ and beta7- memory T helper cells. BMC Immunol. 2004 Jul 5;5:13. (**FIB504**, FC, PubMed)

Meerschaert J, Vrtis RF, Shikama Y, Sedgwick JB, Busse WW, Mosher DF. Engagement of alpha4beta7 integrins by monoclonal antibodies or ligands enhances survival of human eosinophils in vitro. J Immunol. 1999 Dec 1;163(11):6217-27. (**FIB504**, FA, PubMed)

Andrew DP, Berlin C, Honda S, Yoshino T, Hamann A, Holzmann B, Kilshaw PJ, Butcher EC. Distinct but overlapping epitopes are involved in alpha4beta7-mediated adhesion to vascular cell adhesion molecule-1, mucosal addressin-1, fibronectin, and lymphocyte aggregation. J Immunol. 1994 Nov 1;153(9):3847-61. (**FIB504**, FA, PubMed)

### Related Products

11-4321 Rat IgG2a K Isotype Control FITC

Not for further distribution without written consent.

Copyright © 2000-2010 eBioscience, Inc.

Tel: 888.999.1371 or 858.642.2058 • Fax: 858.642.2046 • [www.eBioscience.com](http://www.eBioscience.com) • [info@eBioscience.com](mailto:info@eBioscience.com)