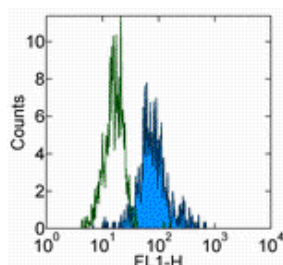


Anti-Human CD85d (ILT4) FITC

Catalog Number: 11-5148

Also Known As: ILT-4, LIR2, LILRB2, MIR10

RUO: For Research Use Only. Not for use in diagnostic procedures.



Staining of normal human peripheral blood cells with Rat IgM kappa Isotype Control FITC (cat. 11-4341) (open histogram) or Anti-Human CD85d (ILT4) FITC (filled histogram). Cells in the monocyte gate were used for analysis.

Product Information

Contents: Anti-Human CD85d (ILT4) FITC


REF **Catalog Number:** 11-5148

Clone: 27D6


Concentration: 5 µL (0.5 µg)/test


Host/Isotype: Rat IgM

Formulation: aqueous buffer, 0.09% sodium azide, may contain carrier protein/stabilizer

 **Temperature Limitation:** Store at 2-8°C. Do not freeze. Light sensitive material.

LOT **Batch Code:** Refer to Vial

 **Use By:** Refer to Vial

 **Caution, contains Azide**

Description

The monoclonal antibody 27D6 recognizes the CD85d protein also known as ILT4, LIR-2. It is a member of the ILT (immunoglobulin-like transcript)/ LIR (leukocyte Ig-like receptor) MIR (monocytes Ig-like receptor) family. CD85d is a 110 kDa single transmembrane receptor containing 3 Ig-like domains and a long cytoplasmic domain containing ITIMs (immunoreceptor tyrosine-based inhibitory motifs). Expression is confined to monocytes, macrophages and dendritic cells. The ligand for CD85d is non-classical class I HLA-G, -B and G1. Upon ligand binding, tyrosine phosphatase SHP-1 interacts with the ITIM. Interaction of HLA-G with ILT4/CD85d is thought to contribute to tolerance during fetal implantation. Additionally it is the levels of ILT3 and ILT4 on DCs that suggests a role in organ allograft rejection.

The monoclonal antibody 27D6 has been shown to block binding of ligand (HLA-G tetramer).

Applications Reported

This 27D6 antibody has been reported for use in flow cytometric analysis.

Applications Tested

This 27D6 antibody has been pre-titrated and tested by flow cytometric analysis of normal human peripheral blood cells. This can be used at 5 µL (0.5 µg) per test. A test is defined as the amount (µg) of antibody that will stain a cell sample in a final volume of 100 µL. Cell number should be determined empirically but can range from 10⁵ to 10⁸ cells/test.

References

Colonna M, Samaridis J, Cella M, Angman L, Allen RL, O'Callaghan CA, Dunbar R, Ogg GS, Cerundolo V, Rolink A. Human myelomonocytic cells express an inhibitory receptor for classical and nonclassical MHC class I molecules. *J Immunol.* 1998 Apr 1;160(7):3096-100.

Allan DS, Colonna M, Lanier LL, Churakova TD, Abrams JS, Ellis SA, McMichael AJ, Braud VM. Tetrameric complexes of human histocompatibility leukocyte antigen (HLA)-G bind to peripheral blood myelomonocytic cells. *J Exp Med.* 1999 Apr 5;189(7):1149-56. (27D6, FA, PubMed)

Colonna M, Nakajima H, Navarro F, López-Botet M. A novel family of Ig-like receptors for HLA class I molecules that modulate function of lymphoid and myeloid cells. *J Leukoc Biol.* 1999 Sep;66(3):375-81 (27D6, PubMed)

Manavalan JS, Rossi PC, Vlad G, Piazza F, Yafilina A, Cortesini R, Mancini D, Suci-Foca N. High expression of ILT3 and ILT4 is a general feature of tolerogenic dendritic cells. *Transpl Immunol.* 2003 Jul-Sep;11(3-4):245-58. (42D1, FA, FC, PubMed)

Related Products

11-4341 Rat IgM Isotype Control FITC

Not for further distribution without written consent.

Copyright © 2000-2010 eBioscience, Inc.

Tel: 888.999.1371 or 858.642.2058 • Fax: 858.642.2046 • www.eBioscience.com • info@eBioscience.com