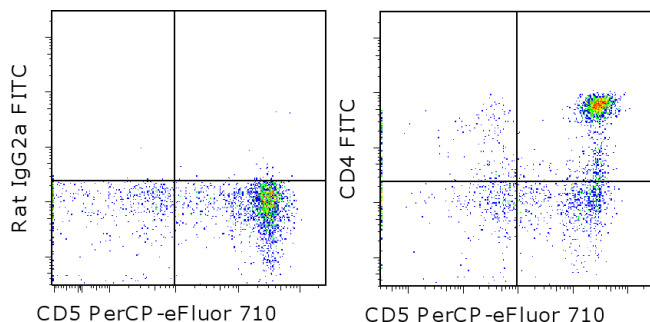


Anti-Canine CD4 FITC

Catalog Number: 11-5040

RUO: For Research Use Only. Not for use in diagnostic procedures.



Staining of normal canine peripheral blood cells with Anti-Canine CD5 PerCP-eFluor® 710 (cat. 46-5050) and Rat IgG2a K Isotype Control FITC (cat. 11-4321) (left) or Anti-Canine CD4 FITC (right). Cells in the lymphocyte gate were used for analysis.

Product Information

Contents: Anti-Canine CD4 FITC
Catalog Number: 11-5040
Clone: YKIX302.9
Concentration: 5 µL (0.125 µg)/test
Host/Isotype: Rat IgG2a, kappa

Formulation: aqueous buffer, 0.09% sodium azide, may contain carrier protein/stabilizer
Temperature Limitation: Store at 2-8°C. Do not freeze. Light sensitive material.
Batch Code: Refer to vial
Use By: Refer to vial

Description

The YKIX302.9 monoclonal antibody reacts with canine CD4, a cell surface receptor expressed on a majority of thymocytes, a subpopulation of mature T cells and dendritic cells. In dogs, CD4 is also highly expressed on neutrophils. CD4 binds to MHC class II on the surface of antigen presenting cells and plays an important role in T cell development and homeostasis.

This YKIX302.9 monoclonal antibody has been reported to block MHC II-restricted T cell responses *in vivo* and *in vitro*.

Applications Reported

This YKIX302.9 antibody has been reported for use in flow cytometric analysis.

Applications Tested

This YKIX302.9 antibody has been pre-titrated and tested by flow cytometric analysis of normal canine peripheral blood cells. This can be used at 5 µL (0.125 µg) per test. A test is defined as the amount (µg) of antibody that will stain a cell sample in a final volume of 100 µL. Cell number should be determined empirically but can range from 10⁵ to 10⁸ cells/test.

References

Bismarck D, Schütze N, Moore P, Büttner M, Alber G, Buttlar HV. Canine CD4(+)CD8(+) double positive T cells in peripheral blood have features of activated T cells. *Vet Immunol Immunopathol.* 2012 Oct 15;149(3-4):157-66 (YKIX302.9, FC, Pubmed)

Cobbold S, Metcalfe S. Monoclonal antibodies that define canine homologues of human CD antigens: summary of the First International Canine Leukocyte Antigen Workshop (CLAW). *Tissue Antigens.* 1994 Mar;43(3):137-54. (YKIX302.9, FC)

Watson CJ, Cobbold SP, Davies HS, Rebello PR, Thiru S, McNair R, Rasmussen A, Waldmann H, Calne RY, Metcalfe SM. Immunosuppression of canine renal allograft recipients by CD4 and CD8 monoclonal antibodies. *Tissue Antigens.* 1994 Mar;43(3):155-62. (YKIX302.9, FA)

Not for further distribution without written consent.

Copyright © 2000-2012 eBioscience, Inc.

Tel: 888.999.1371 or 858.642.2058 • Fax: 858.642.2046 • www.ebioscience.com • info@ebioscience.com

Anti-Canine CD4 FITC

Catalog Number: 11-5040

RUO: For Research Use Only. Not for use in diagnostic procedures.

Related Products

11-4321 Rat IgG2a K Isotype Control FITC (eBR2a)

17-5080 Anti-Canine CD8a APC (YCATE55.9)

46-5050 Anti-Canine CD5 PerCP-eFluor® 710 (YKIX322.3)

48-5450 Anti-Canine CD45 eFluor® 450 (YKIX716.13)