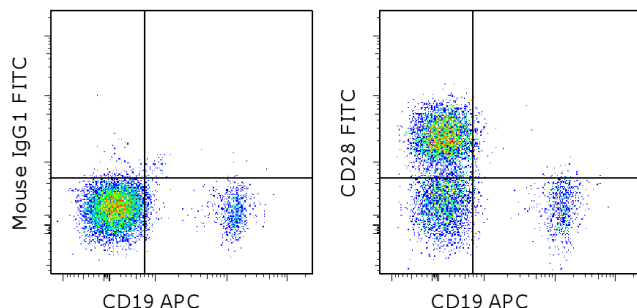


Anti-Human CD28 FITC

Catalog Number: 11-0289

RUO: For Research Use Only. Not for use in diagnostic procedures.



Staining of normal human peripheral blood cells with Anti-Human CD19 APC (cat. 17-0199) and Mouse IgG1 K Isotype Control FITC (cat. 11-4714) (left) or Anti-Human CD28 FITC (right). Cells in the lymphocyte gate were used for analysis.

Product Information



Contents: Anti-Human CD28 FITC

Catalog Number: 11-0289

Clone: CD28.2

Concentration: 5 µL (1 µg)/test

Host/Isotype: Mouse IgG1, kappa

HLDA Workshop: V 5T CD28.05



LOT



Formulation: aqueous buffer, 0.09% sodium azide, may contain carrier protein/stabilizer

Temperature Limitation: Store at 2-8°C. Do not freeze. Light sensitive material.

Batch Code: Refer to vial

Use By: Refer to vial

Contains sodium azide

Description

The CD28.2 monoclonal antibody reacts with the human CD28 molecule, a 44 kDa homodimer expressed by thymocytes, mature T cells and plasma cells. CD28 is a ligand for CD80 (B7-1) and CD86 (B7-2) and is a potent co-stimulator of T cells. Signaling through CD28 augments IL-2 and IL-2 receptor expression as well as cytotoxicity of CD3-activated T cells.

Applications Reported

The CD28.2 antibody has been reported for use in flow cytometric analysis.

Applications Tested

This CD28.2 antibody has been pre-titrated and tested by flow cytometric analysis of normal human peripheral blood cells. This can be used at 5 µL (1 µg) per test. A test is defined as the amount (µg) of antibody that will stain a cell sample in a final volume of 100 µL. Cell number should be determined empirically but can range from 10⁵ to 10⁸ cells/test.

References

Karlsson I, Malleret B, Brochard P, Delache B, Calvo J, Le Grand R, Vaslin B. FoxP3+ CD25+ CD8+ T-cell induction during primary simian immunodeficiency virus infection in cynomolgus macaques correlates with low CD4+ T-cell activation and high viral load. *J Virol.* 2007 Dec;81(24):13444-55 (**CD28.1**, NHP crossreactivity)

Battifora M, Pesce G, Paolieri F, Fiorino N, Giordano C, Riccio AM, Torre G, Olive D, Bagnasco M. B7.1 costimulatory molecule is expressed on thyroid follicular cells in Hashimoto's thyroiditis, but not in Graves' disease. *J Clin Endocrinol Metab.* 1998 Nov;83(11):4130-9. (**CD28.1**, IHC frozen)

Nunès J, Klasen S, Ragueneau M, Pavon C, Couez D, Mawas C, Bagnasco M, Olive D. CD28 mAbs with distinct binding properties differ in their ability to induce T cell activation: analysis of early and late activation events. *Int Immunol.* 1993 Mar;5(3):311-5.

Schlossman, S., L. Bloumsell, et al eds. 1995. Leucocyte Typing V: White Cell Differentiation Antigens. Oxford

Not for further distribution without written consent.

Copyright © 2000-2012 eBioscience, Inc.

Tel: 888.999.1371 or 858.642.2058 • Fax: 858.642.2046 • www.ebioscience.com • info@ebioscience.com

Anti-Human CD28 FITC

Catalog Number: 11-0289

RUO: For Research Use Only. Not for use in diagnostic procedures.

University Press. New York.

Related Products

00-4222 Flow Cytometry Staining Buffer

11-4714 Mouse IgG1 K Isotype Control FITC (P3.6.2.8.1)

17-0199 Anti-Human CD19 APC (HIB19)