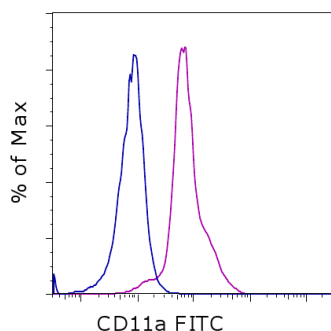


Anti-Mouse CD11a FITC

Catalog Number: 11-0111

Also known as: Integrin alpha L, Lymphocyte Function-Associated Antigen

RUO: For Research Use Only. Not for use in diagnostic procedures.



Staining of BALB/c splenocytes with 0.25 ug of Rat IgG2a K Isotype Control FITC (cat. 11-4321) (blue histogram) or 0.25 ug of Anti-Mouse CD11a FITC (purple histogram). Cells in the lymphocyte gate were used for analysis.

Product Information



Contents: Anti-Mouse CD11a FITC

Catalog Number: 11-0111

Clone: M17/4

Concentration: 0.5 mg/mL

Host/Isotype: Rat IgG2a, kappa



Formulation: aqueous buffer, 0.09% sodium azide, may contain carrier protein/stabilizer

Temperature Limitation: Store at 2-8°C. Do not freeze. Light sensitive material.



Batch Code: Refer to vial



Use By: Refer to vial

Description

The M17/4 monoclonal antibody reacts with mouse CD11a, the 180 kDa integrin alpha L, also known as the lymphocyte function associated antigen-1 (LFA-1) alpha chain. LFA-1, formed by non-covalent association of CD11a with CD18 (integrin beta 2), serves as an important adhesion molecule involved in lymphocyte and granulocyte function. CD54 (ICAM-1), CD102 (ICAM-2), and CD50 (ICAM-3) are ligands for LFA-1. CD11a is expressed by all leukocytes.

Applications Reported

The M17/4 antibody has been reported for use in flow cytometric analysis.

Applications Tested

The M17/4 antibody has been tested by flow cytometric analysis of mouse splenocytes. This can be used at less than or equal to 0.5 µg per test. A test is defined as the amount (µg) of antibody that will stain a cell sample in a final volume of 100 µL. Cell number should be determined empirically but can range from 10⁵ to 10⁸ cells/test. It is recommended that the antibody be carefully titrated for optimal performance in the assay of interest.

References

Sanchez-Madrid F, Simon P, Thompson S, Springer TA. Mapping of antigenic and functional epitopes on the alpha- and beta-subunits of two related mouse glycoproteins involved in cell interactions, LFA-1 and Mac-1. J Exp Med. 1983 Aug 1;158(2):586-602.

Sanchez-Madrid F, Davignon D, Martz E, Springer TA. Sanchez-Madrid F, Davignon D, Martz E, Springer TA. Cell Immunol. 1982 Oct;73(1):1-11.

Related Products

00-4222 Flow Cytometry Staining Buffer

11-4321 Rat IgG2a K Isotype Control FITC (eBR2a)

Not for further distribution without written consent.

Copyright © 2000-2012 eBioscience, Inc.

Tel: 888.999.1371 or 858.642.2058 • Fax: 858.642.2046 • www.ebioscience.com •
info@ebioscience.com

Anti-Mouse CD11a FITC

Catalog Number: 11-0111

Also known as: Integrin alpha L, Lymphocyte Function-Associated Antigen

RUO: For Research Use Only. Not for use in diagnostic procedures.

Not for further distribution without written consent.

Copyright © 2000-2012 eBioscience, Inc.

Tel: 888.999.1371 or 858.642.2058 • Fax: 858.642.2046 • www.ebioscience.com •
info@ebioscience.com